

ISX Series

Serial Memory Extended Length Tokens

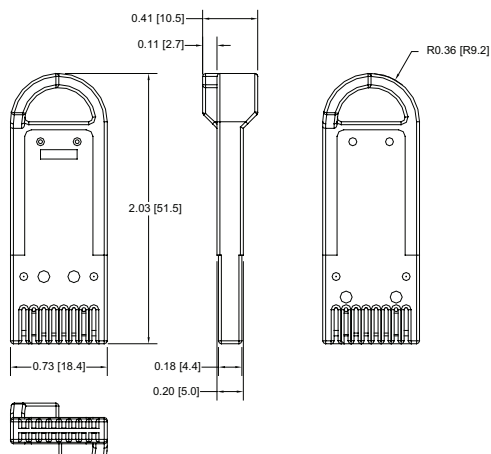


The power of memory. Secured.

The ISX series memory tokens contain 1 Kb to 512 Kb of non-volatile, serial I²C EEPROM memory¹. A thin profile and space-saving interface connection makes them especially well suited for use in compact systems. The token is molded using a rugged composite, which protects the embedded memory from harsh environmental influences, so it retains data even when exposed to dirt, moisture, chemicals, X-rays and electrostatic discharge. The token design features a redundant contact system, ensuring maximum reliability and ease-of-use, as the token can be inserted into the receptacle with either side up. Customization options are available, including color-matching and custom logos.



For pin-out information, refer to the individual data sheets for the SR4000 family of receptacles.



Drawing dimensions are in inches and millimeters [mm]. Dimensions are nominal and subject to manufacturer's tolerances.

NOTE: Conforms with Directive 2011/65/EU of the European Parliament and of the Council of 8 June 2011, and as amended by Directive 2015/863/EU, on the restriction of the use of certain hazardous substances in electrical and electronic equipment.



WARNING: Cancer and Reproductive Harm - www.P65Warnings.ca.gov

221-0090-000 Rev. E 4/19

View our full product line at www.datakey.com

ATEK Access Technologies
10025 Valley View Road, Ste. 190
Eden Prairie, MN 55344 U.S.A.

PH: 1.800.523.6996
FAX: 1.800.589.3705
+1.218.829.9797

www.atekaccess.com

MECHANICAL	
Contact Life	10,000 Insertion/Removal Cycles Min.
Contact Arrangement	Fully Redundant (Front:Back)
ELECTRICAL ¹	
Power, Active	25 mW Typical at 5 V
Power, Standby	200 µW Typical at 5 V
Voltage ³	2.7 to 5.5 V
ESD Protection	15 kV (Per Std. 064-1028)
Device Address	Zero (0), Consult ATEK for ISX512Kb
ENVIRONMENTAL	
Storage Temperature	-40°C to +100°C
Operating Temperature	-40°C to +85°C
Relative Humidity	5% to 95% (non-condensing)
MEMORY ¹	
Token	Capacity:
ISX1Kb	1 Kb (1,024 bits) 128 x 8
ISX4Kb	4 Kb (4,096 bits) 512 x 8
ISX16Kb	16 Kb (16,384 bits) 2048 x 8
ISX64Kb	64 Kb (65,536 bits) 8192 x 8
ISX256Kb	256 Kb (262,144 bits) 32,768 x 8
ISX512Kb	512 Kb (524,288) 32,768 x 8 x 2
Read Cycles	Unlimited
Write/Erase Cycles	1,000,000 Cycles Minimum
Data Life (Storage)	10 Years Minimum
MATING COMPONENT(S)	
Panel-Mount Receptacle	SR4210, SR4310, SR4410, SR4310xL, SR4410xL
Board-Mount Receptacle	SR4210PCB/SMT, SR4220PCB/SMT, SR4230PCB/SMT
Programmer	SlimLink™ III (recommended), SlimLink II
ORDERING INFORMATION ²	
ISX1Kb	611-0150-00xA
ISX4Kb	611-0151-00xA
ISX16Kb	611-0152-00xA
ISX64Kb	611-0153-00xA
ISX256K	611-0059-00xA
ISX512K ⁴	611-0060-00xA

- 1: Complete I²C interface specification available at www.datakey.com.
- 2: "x" indicates optional color number. "A" suffix on part number indicates RoHS compliance. See CE declaration to the left for details.
- 3: It is recommended that all new key/token implementations be designed to operate with power supplies in the range of 2.7 to 3.6 volts. Although there are no immediate difficulties in procuring memory devices that operate in the 4.5 to 5.5 volt range, future availability may be impacted as semiconductor manufacturers shrink their die geometries.
- 4: ISX512K is not recommended for new designs. Contact ATEK with any questions.



Access the power of technology.